

MAP SHEET #1031050 (Map 3 of 6)
FISHERIES INTERPRETIVE MAP

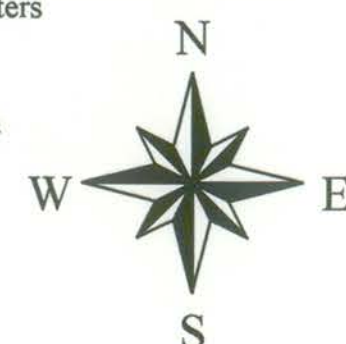
1:20,000 RECONNAISSANCE FISH AND FISH HABITAT INVENTORY
Copper (Zymoetz) River Watershed WSC 440 - 000000 - 00000

WEST COPPER

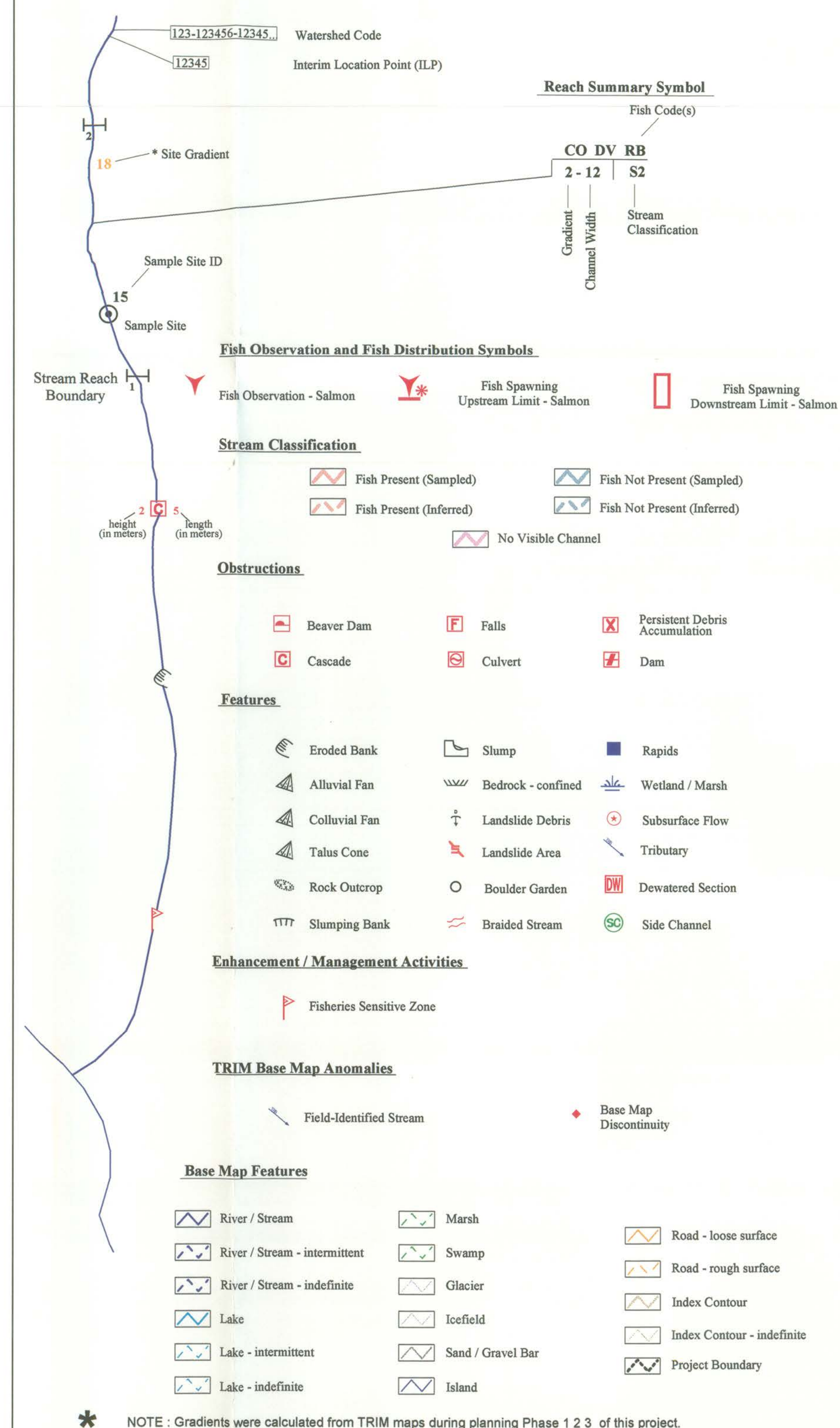
Licensee: Skeena Cellulose Inc. Forest District: Kalum Year: 1999

Scale: 1:20000 Projection: UTM Contour Intervals: 20m

Company: *KK* of **TRITON** Environmental Consultants Ltd.



STREAM INFORMATION SUMMARY

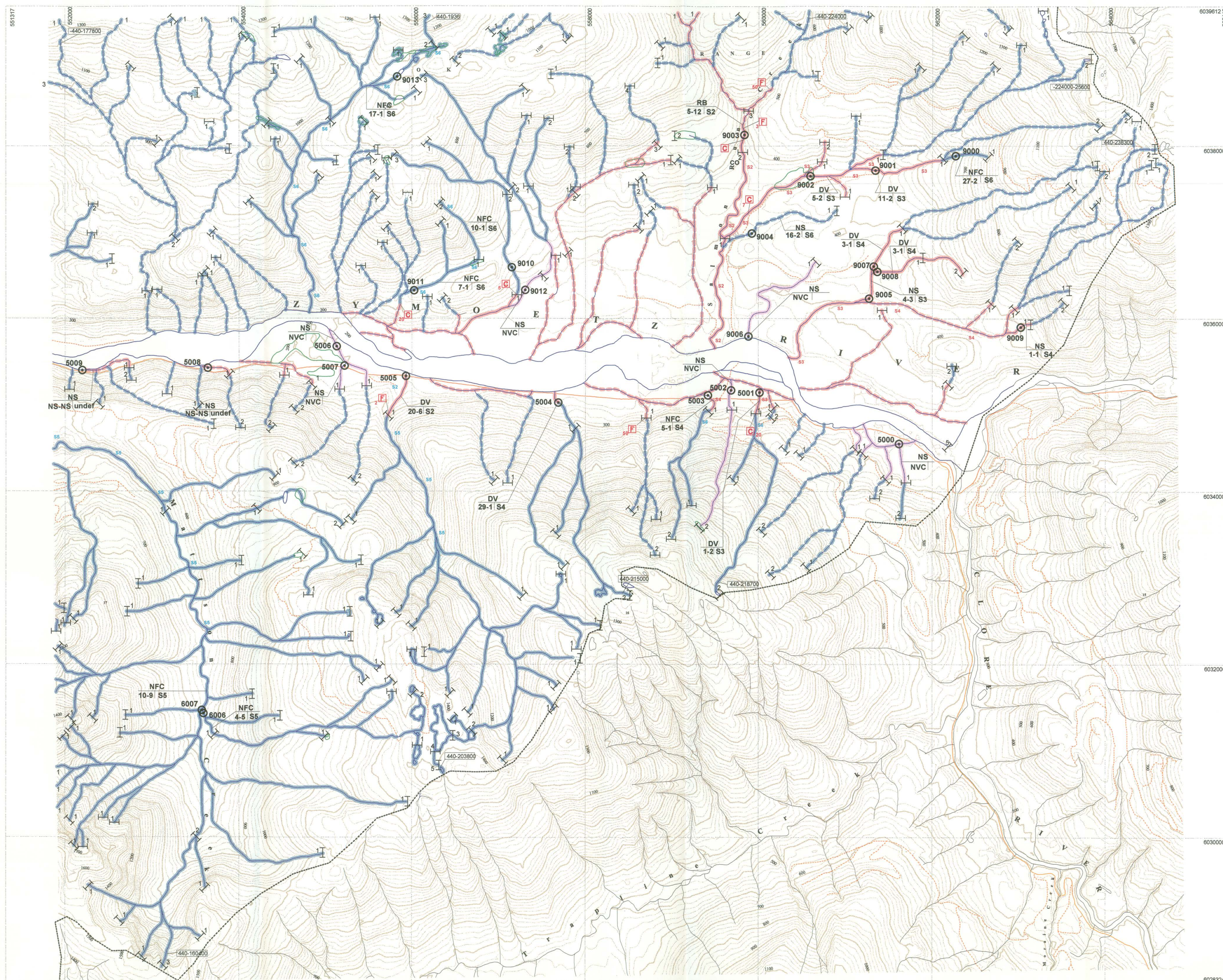
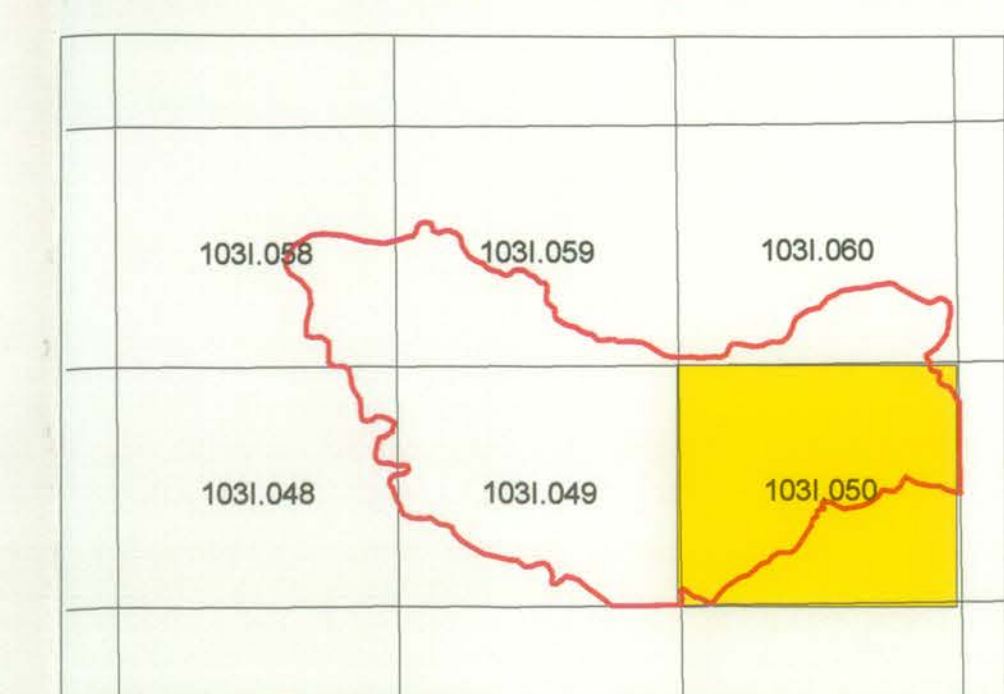


FISH SPECIES

CODE	DESCRIPTION	CODE	DESCRIPTION	CODE	DESCRIPTION
NFC	No Fish Caught	DV	Dolly Varden	CH	Chinook Salmon
NS	Not Sampled	RB	Rainbow Trout	CM	Chum Salmon
SP	Species Unknown	BT	Bull Trout	PK	Pink Salmon

Source: *MELP*

PROJECT STUDY AREA BOUNDARY



This product has been accepted as being in accordance with approved standards within the limits of Ministry quality assurance procedures. Users are cautioned that interpreted information on this product developed for the purposes of the Forest Practices Code Act and Regulations, for example stream classifications, is subject to review by a statutory decision maker for the purposes of determining whether or not to approve an operational plan.

INVENTORY SOURCE INFORMATION CODES

CODE	DESCRIPTION	CODE	DESCRIPTION	CODE	DESCRIPTION	CODE	DESCRIPTION	CODE	DESCRIPTION
BASE	Base Map	APP	Airphoto, Planimetric	AP	Aerial Photography	DV/MGNT	Group persons responsible for conducting inventory		
TRIM	1:20,000 TRIM Map	VN	Video, Approximate	VID	Video	MELP	Ministry of Environment, Lands & Parks		
NTS	1:50,000 NTS Map	VPC	Video, Corrected						
OTH	Other Map Source	OTH	Other						
STR SYM	Stream Symbol	NVA	Not Applicable						
INV	Field Inventory	NVD	Detailed Field Inventory						
SB	Summary	NVO	General Field Inventory						
NA	Not Applicable	OTH	Other						
OTH	Other	LOC	Location Information						
		INV	Field Inventory						
		SB	Summary						
		FDG	Field GPS						
		APE	Airphoto, Estimate						
		OTH	Other						

FOREST PRACTICES CODE
RIPARIAN CLASSES
(STREAM CLASSIFICATION)

Riparian Class	Average Channel (m)	Reserve Zone (m)	Management Zone (m)	Total RMA (m)
S1	>100	0	100	100
S2	>20	20	20	70
S3	>5	20	20	50
S4	<1.5	0	20	40
S5	>3	0	20	30
S6	<3	0	20	20

BASE MAP INFORMATION

Projection: *UTM*
Datum: *NAD83*
UTM Zone: *9*

INVENTORY SOURCE INFORMATION

BASE: *TRIM* STR SYM: *INV*
LOC: *FDG* LK SYM: *NA*
HAB: *INV* FISH: *INVD*
DATE INV: *1998/10/07* INV MGNT: *OTH*